



SELSPORTS

ROOFTOP SPORTS SURFACES

POLYMERIC SURFACE

Polymeric surfaces have long been recognised and recommended by Sport England. SELSports can design and build a polymeric surface to suit your rooftop layout. We use a full EPDM system accredited to IAAF standards. This surface is ideal for MUGA areas, running lanes, etc... due it's good slip resistance and shock absorbency.

13mm of Polymeric EPDM

25mm of 2-5mm resin bound gravel

85mm SELSports units

SELSports Permatex HD300 geotextile

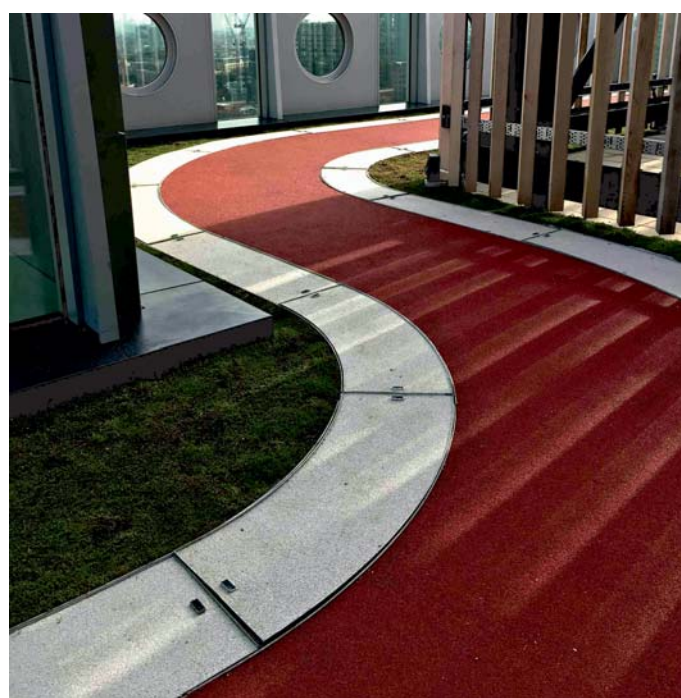
Roof Insulation to Engineers Spec.

Typical Polymeric Construction

This type of surface allows for wet poured rubber to be hand laid, which prevents the possibility of the EPDM granules escaping to the surrounding areas and with the 13mm deep surface being a full EPDM there is less possibility of the surface fading or blackening with high use as the full depth of the polymeric is a consistent colour. The SELSports Polymeric option offers a lightweight permeable paving solution for rooftop sports, social and recreational areas.

Typical Loadings

- Polymeric EPDM - 15kg/m²
- Resin Bound Gravel - 37kg/m²
- 85mm SELSports units - 10kg/m²
- SELSports Permatex HD300 - 0.3kg/m²



Benefits

- Permeable, rainwater can efficiently pass through the finished surface.
- Fast installation, a 2 man gang can lay 30m² or more per hour and, with good weather conditions, a gang of 5 men would expect to cover 250m² in a single day
- Colour, there are a huge choice of colours available
- Flexible, once set it's flexible enabling some resistance to cracking
- Wheelchair friendly, making it ideal for DDA schemes

SELSports, Canal House, Bonsall Street,
Blackburn BB2 4DD Tel: 01254 589987